

# Liminal Aesthetics: How Tristan Murail's GONDWANA Subverts Harmony and Timbre

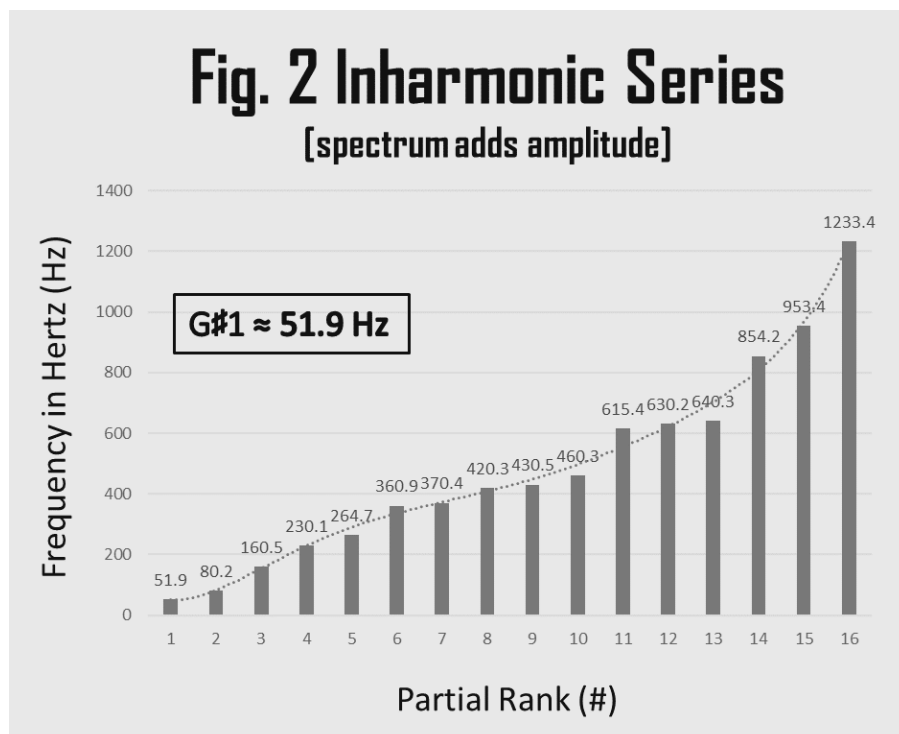
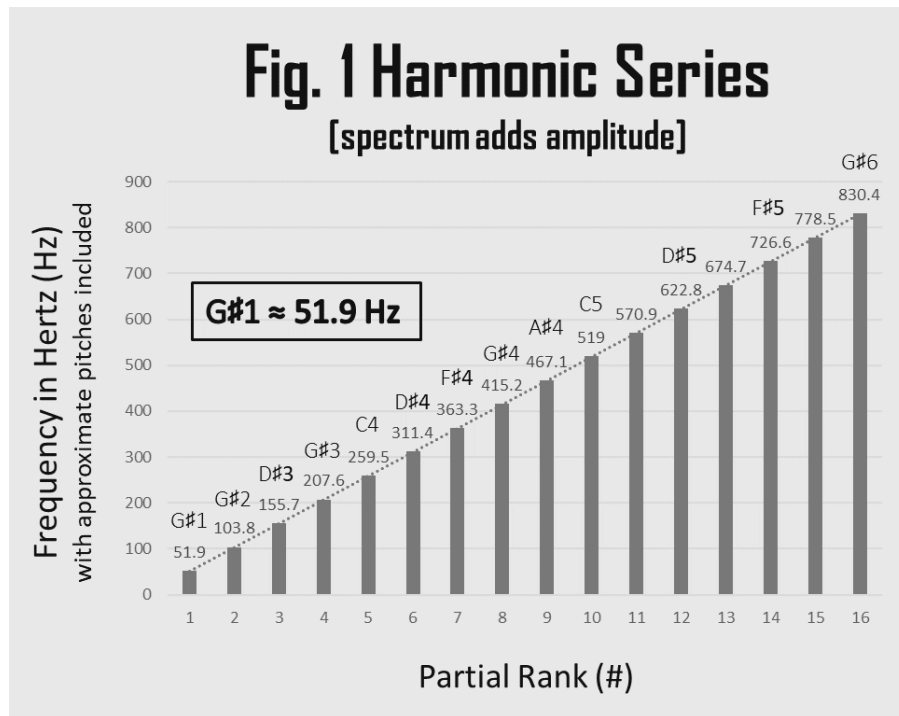


Fig. 3: First Aggregate, modeled after a bell spectrum  
 Graphic Representation of Pitch Content and Orchestration

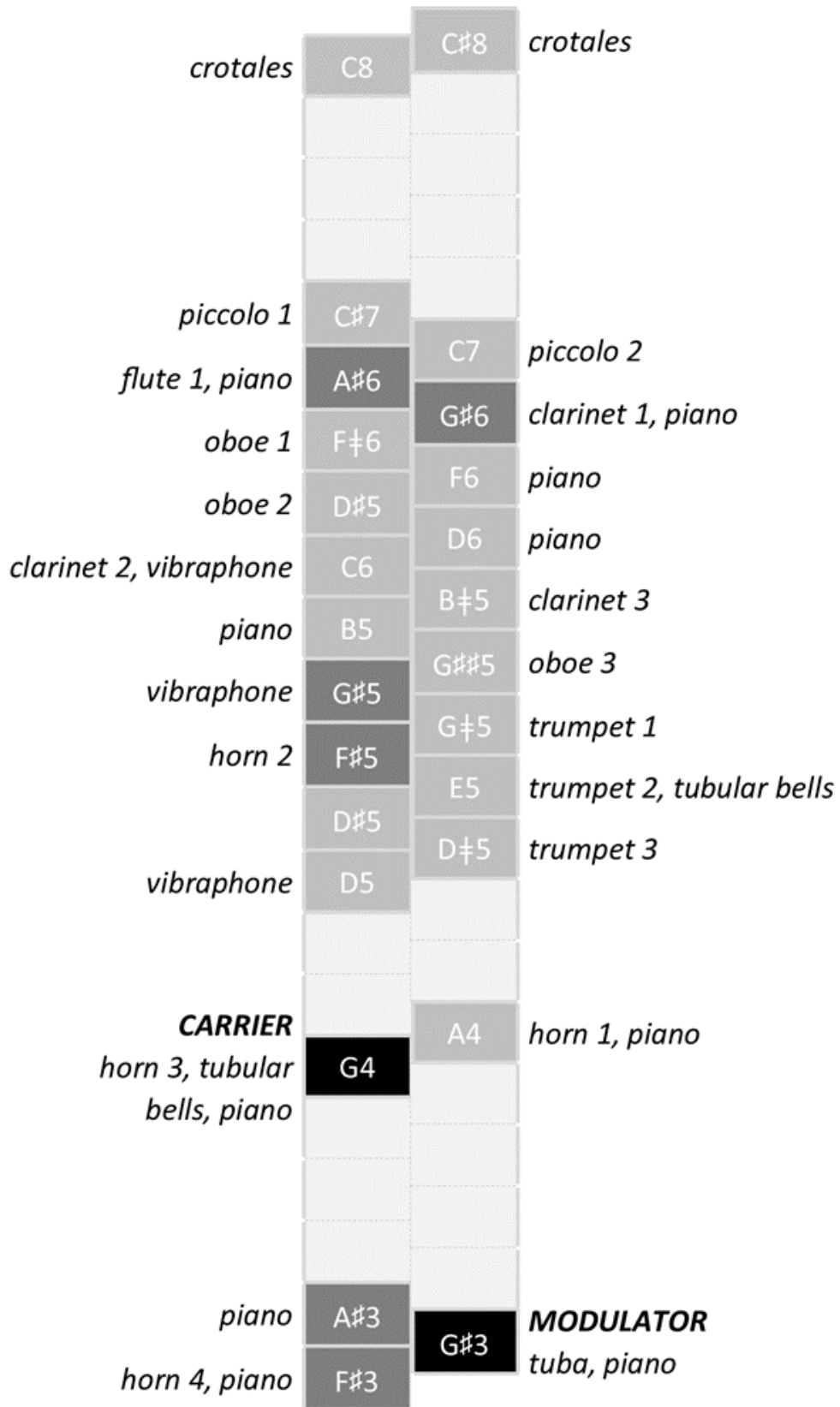


Fig. 4: Twelfth Aggregate, modeled after a brass spectrum  
 Graphic Representation of Pitch Content and Orchestration

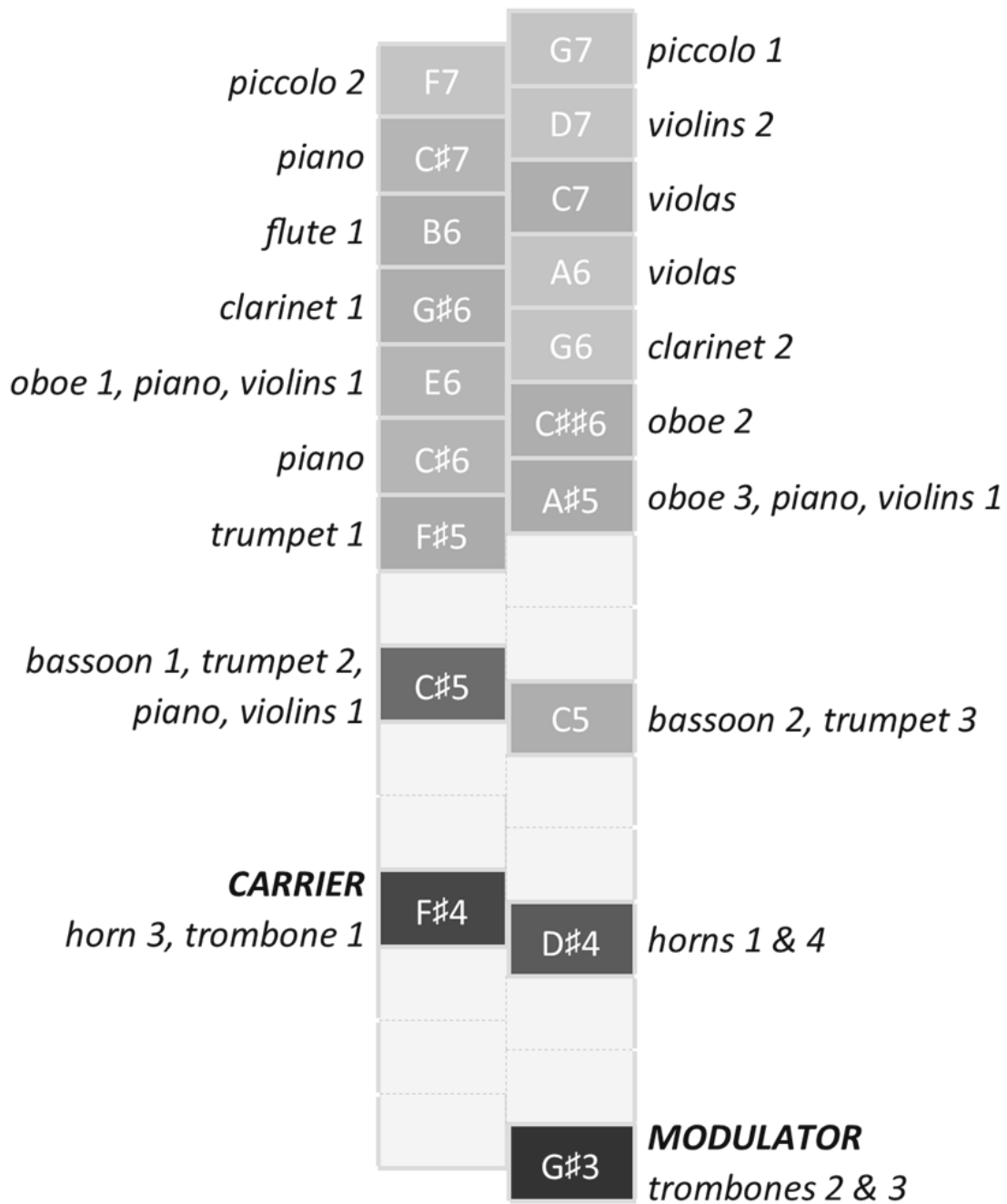


Fig. 5: Final, Inharmonic Aggregate in Section F  
 Graphic Representation of Pitch Content and Orchestration

